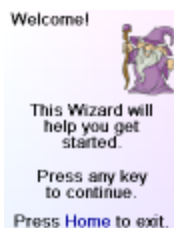


**Icon Remote Quick Setup Guide - Use this sheet first to give the Icon Remote a quick try. Then you can refer to the owner's manual for more details on setup and operation.**

**Using the Wizard**

After you insert the batteries the Wizard screen appears. You can exit the Wizard at any time by pressing the Home button (located just below the screen). Follow the instructions on the Wizard screens to familiarize yourself with the OK, Back, and Side Keys.

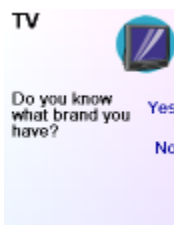


You can go back and forth through the Wizard but once you leave it and move on to setting up devices you won't see the Wizard again unless you do a Master Reset.

**To do a Master Reset:** Press the Home key, then press Setup, then press Clear Settings, then press Master Clear. Note this will erase everything you have set up in the remote.

**Setting Up Your Devices**

After you've been through the Wizard, the screen shown to the right appears. This is the start of the Wizard to set up your devices (TV being the first one).



If you know your brand of TV, select Yes which results in a faster search for your TV's code. (Selecting No searches through the complete library of codes, rather than just the codes for your brand of TV).

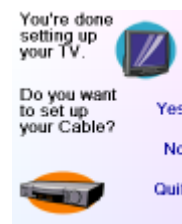
Selecting Yes takes you to a screen where the most popular brands are shown next to the Side Keys. If your brand isn't shown you can press the Side Key adjacent to Next to show more brands, or press the Side Key adjacent Back to go back to the previous screen of brands.

After you select your brand, the next screen tells you to point the remote at your TV and keep pressing Power until it responds.

Pressing Power sends the Power code to your TV and the screen shows that you've sent code 1 of xx (xx will vary by brand). Keep pressing Power until your TV responds and then press Save. (You can press the Side Key adjacent to Last Code if you overshoot).

Pressing Save shows a screen that instructs you to try a few other keys on the remote to make sure you've found the correct code. Tip: try keys like Menu, and Guide. Power might work yet you still might not have the correct code. If several keys seem to work fine, press Save Code.

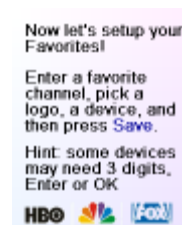
If some keys don't work, select Change Code (or press Back) to go back and find another code that works better. Pressing Save Code again takes you to screen where you set up a Cable box.



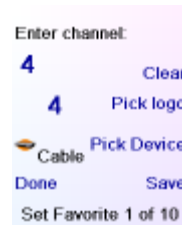
You can quit at this point and set up other devices later, or you can continue and set up other devices - SAT, DVR, DVD, VCR, Audio, CD Player, or either of the 2 AUX devices. Let's assume in this case that you set up a TV, Cable, and SAT.

**Setting Up Your Favorites**

Once you've gone through the Wizard and set up at least a TV, and set up more devices, or skipped the rest of them, you arrive at screen to the right.



When you press any digit key, say digit 4, to enter a channel number, you go to a screen where you can enter more digits if desired. The channel number can include a dash (-) for digital channels, e.g., 2-3, or can include ENTER, or OK, if your device requires it to change channels, e.g. 472Ok, or 550Ent.



Now you press the Side Key adjacent to "Pick Logo." You are shown a screen of popular channel logos. You can select Next or Back to see more logos.

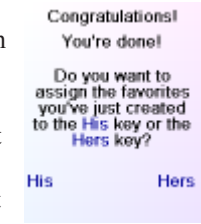


In this example let's select the NBC logo. The screen now shows that we've chosen channel 4 and the NBC logo. Then let's select Pick Device, and choose Cable (if you've set one up).

Select Save to save the setting for this Favorite. Set Favorite 2 of 10 is now displayed at the bottom of the screen to indicate that you can add another Favorite channel. Again just press a channel number key on the remote, choose a logo and change the Device Type (if you want to).

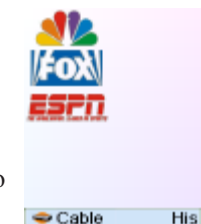


Add a few more Favorites. You can always Delete, or Edit them later, or even reorder their positions. Select Done when you're finished setting up Favorites (you can set up more later).



The next screen lets you choose if the Favorites you just set up are to be stored in the "His" group or the "Hers" group. Later you can set up Favorites in lots of different Groups, not just His and Hers.

Selecting His takes you to a screen showing that you now have NBC set as the first Favorite in the "His" Group, as well as any other Favorites you set up.



When you're finished setting up Favorites, press the Home button (located to the left below the screen) to go back to the Home screen.

At any time, you can press the Favorites button and then select His, or press the His button at the top left hand side of the remote to go to your Favorites screen. Then pressing the button next to the NBC logo will (in this case) change the channel on your Cable box to NBC (in this case channel 4).

